

KOH 40-S High Power Fixture Guide

Indoor | Surface/Suspended | Output up to 2190lm

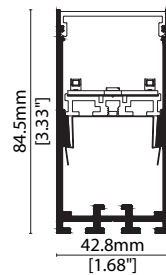


Key applications

- ✓ Ceiling
- ✓ Office lighting
- ✓ Downlighting
- ✓ Wall grazing
- ✓ Interior

Key features

- ✓ Control Gear
- ✓ Custom lengths
- ✓ Decorative
- ✓ Diffusion: Homogenous
- ✓ Direct view
- ✓ Extensive CCT range
- ✓ Form factor: Large
- ✓ High lumen efficacy
- ✓ IP40
- ✓ Lensed
- ✓ Output max



MOUNTING METHODS



KKS-07 Suspension mounting kit



KKS-08 Ceiling rose



KKJ-03 Joining bar

KOH 40-S High Power

Specification sheet



Dimensions	H84.5/W42.8/L580-1700mm (H3.33/W1.68/L22.83-66.93in)
PCB Cut-point	560/1120/1680mm (22.05/44.09/66.14in)
LED Pitch	-
Chip	h-line CREE/Lumileds
Cover/Optics	Louvre + (Frosted Cover/10°/20°/30°/Spread Lens)
CCT	h-line : 2200K/2700K/3000K/3500K/4000K/5000K
LED binning	h-line : 4-step MacAdam Ellipse (5000K)
CRI	≥90 (2700K/3000K) ≥80 (2200K/3500K/4000K) ≥75 (5000K)
Lifetime	50,000 hours @ 25°C (50,000 hours @ 77°F)
Operating temp	T _a = -20 to 45°C (T _c max = 62.9°C) T _a = -4 to 113°F (T _c max = 145.2°F)
IP Rating	IP40
Finish	Matt Silver/Grey/White/Black/Bronze Powder Coated
Mounting	Surface mounting via screw fixing, suspended via suspension kit
Power feed	Male/female connectors
Control	0-10V/DALI (Integrated Power Supply)



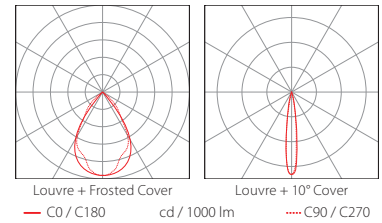
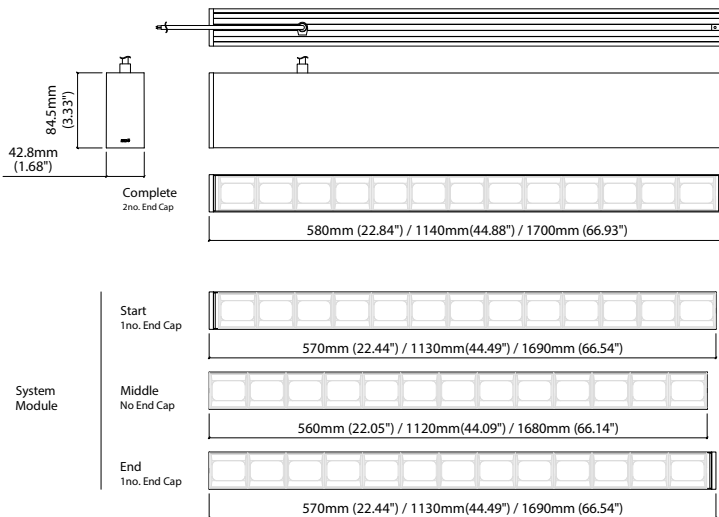
LED Grading Key

Exclusive Grade

h-line*	*KKDC tuned
Constant Voltage Lensed High Power LED	CCT range
3-step CCT range (4-step for 5000K)	

Power consumption	Supply voltage	Supply current	Power factor:
33.5W	240V AC 50Hz	0.14A	0.95 @ 239.99V, 50Hz

	Louvre + Frosted Cover	Louvre + 10° Lens	Louvre + 20° Lens	Louvre + 30° Lens	Louvre + Spread Lens	CRI	R9	Rf	Rg
h-line	870lm 27lm/W	2190lm 65.2lm/W	2150lm 64.1lm/W	1890lm 56.4lm/W	810lm 24.1lm/W	94	74	92	102



Data derived from independent UKAS/IESNA LM-79-08 accredited testing of production samples.

KOH 40-S High Power

Code Table



FIXTURE

Model	Finish	Cover	Grade	LED Type ¹	Colour (CCT)	Length Availability ²	Lens	Module Type*	Control Type	Input												
KOH 40-S	Matt White Paint	Louvre	T	h	High Power	957A	Frosted lens	Complete	0-10V	4	AC 100V											
	Matt Silver Paint											MW	h	2200K ⁴	22	580mm	m	0580	FL	FE	b	
	Matt Grey Paint											MS	h	2700K ³	27	1140mm	m	1140	10°	LE	3	AC 220-240V
	Matt Black Paint											MG	h	3000K ³	30	1700mm	m	1700	20°	XE	5	No PSU
	Bronze Paint											MB	h	3500K ⁴	35	22.05in	i	0022	30°	RE		
												BP	h	4000K ⁴	40	44.09in	i	0044	Spread lens	SL		
					5000K ⁵	50	66.14in	i	0066													

¹ Refer to **LED Grading Key** on **Specification sheet** page

² Refer to **Length Availability List** or enter total run length instead of length code

³ 2700K/3000K – 90CRI

⁴ 2200K/3500K/4000K – 80CRI

⁵ 5000K – 75CRI

* Module Type (various fixture lengths)

Complete	FE	
Start	LE	
Middle	XE	
End	RE	

Code Example:

GA	-	MW	-	T	-	h	-	957A	-	30	-	m	-	1140	-	30	-	FE	-	4	-	d
KOH 40-S		Matt White Paint		Louvre		h		High Power		3000K		1140mm		30°		Complete		0-10V		4		AC 220-240V

ACCESSORIES

Mounting Accessories

KKJT-03	Joining Bar
KKSW-07	Suspension Mounting Kit
KKSW-08	Ceiling Rose

Connection Accessories

KKCN-26	Power Feed Cable
KKCN-31	Power Feed Cable (Non-Fabric)

* Refer to **Power feed** on **Accessories** pages

PSU/Driver

0-10V/DALI (Integrated Power Supply)

* Refer to **Mounting accessories** on **Accessories** pages

Colour	LED	Lumen/module	Wattage	Spec Doc	Length
Single CCT	630A	1170/module	17.5	KOH 40-S High CRI	560/1120/1680mm (22.05/44.10/66.14in)
	957A	2190/module	33.5	KOH 40-S High Power	560/1120/1680mm (22.05/44.10/66.14in)

* Performance data: h-line, louvre + 10° lens, 3000K, 580mm module

KOH 40-S High Power Length Availability List

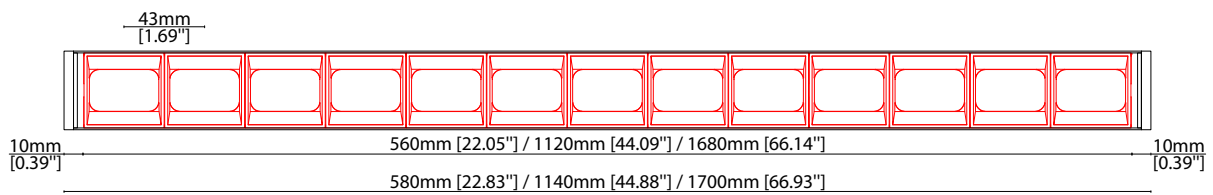


Length Code		Fixture Length ¹		LED Strip ²		End Cap Dimension ³		Wattage (W)	Output (lm)
Metric	Imperial(US)	Metric	Imperial(US)	Metric	Imperial(US)	Metric	Imperial(US)		3000K (Test Data)
m0580	i0023	580mm	22.83in	560mm	22.05in	10mm	0.39in	33.50	2184
m1140	i0045	1140mm	44.88in	1120mm	44.09in	10mm	0.39in	67.00	4368
m1700	i0067	1700mm	66.93in	1680mm	66.14in	10mm	0.39in	100.50	6553

¹ Actual total overall length of light fixture (LED strip + end caps + void/wire hole)

² Actual length of PCB strip

³ Actual length of 2x end caps



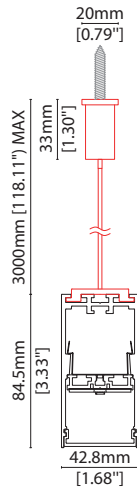
MOUNTING ACCESSORIES

Note: Accessories are to be ordered separately with corresponding code shown below.



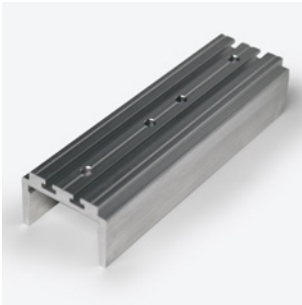
KKS-07

Suspension mounting kit
(allow 2 per metre/40in)
Aluminium finish
L20/W20/H3000mm
(L0.79/W0.79/H118.11")



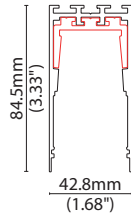
KKS-08

Ceiling rose
Dia 127mm (5") x H 6.35mm (0.25")
Maximum weight 20kg per/kit



KKJ-03

Joining bar
(allow 1 per join)
L120/W38.3/H26.3mm
(L4.72/W1.50/H1.03")



POWER CABLE



KKN-26

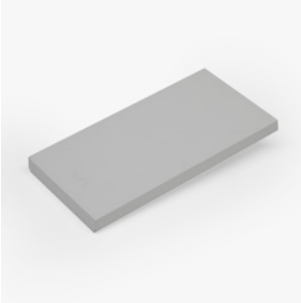
Power Feed Cable



KKN-31

Power Feed Cable (Non-Fabric)

END CAPS AND LIGHT LEAK TAPE



- KKEC-S1 (2no.) - End cap pair (Mat white)
- KKEC-S2 (2no.) - End cap pair (Mat silver)
- KKEC-S3 (2no.) - End cap pair (Mat gray)
- KKEC-S4 (2no.) - End cap pair (Mat black)
- KKEC-S5 (2no.) - End cap pair (Bronze)



Black tape (prevents light leak)